

Evacuation Diagram

Waterman Mont Albert

Ground/3-7 Hamilton Street,
Mont Albert VIC 3127

EMERGENCY SERVICES



IN CASE OF FIRE, REMEMBER RACE

R



REMOVE
ANY PERSON IN DANGER.

A



ALERT
RAISE THE ALARM.

C

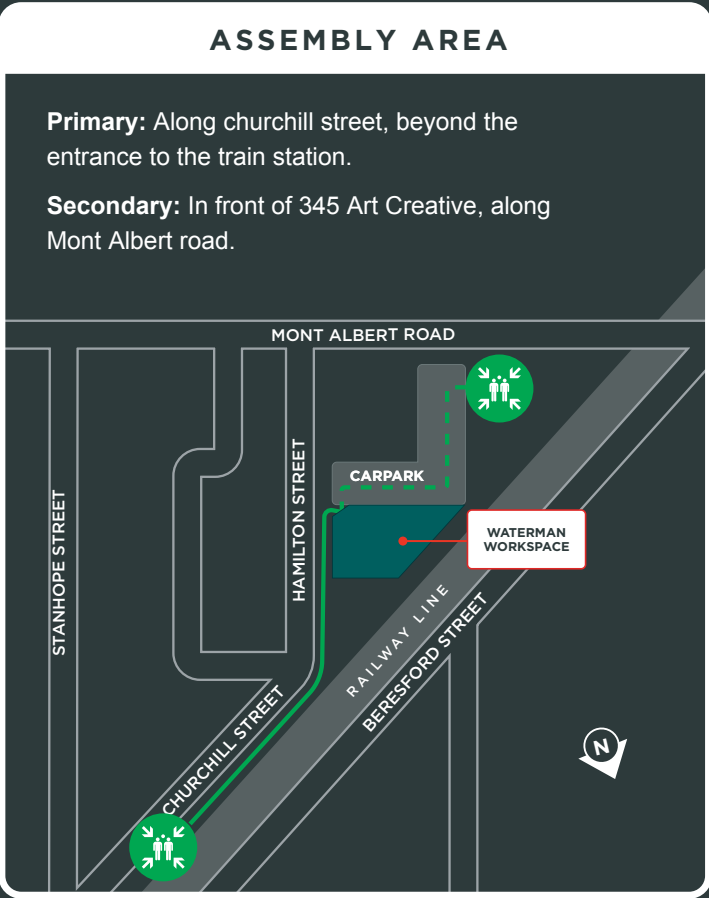
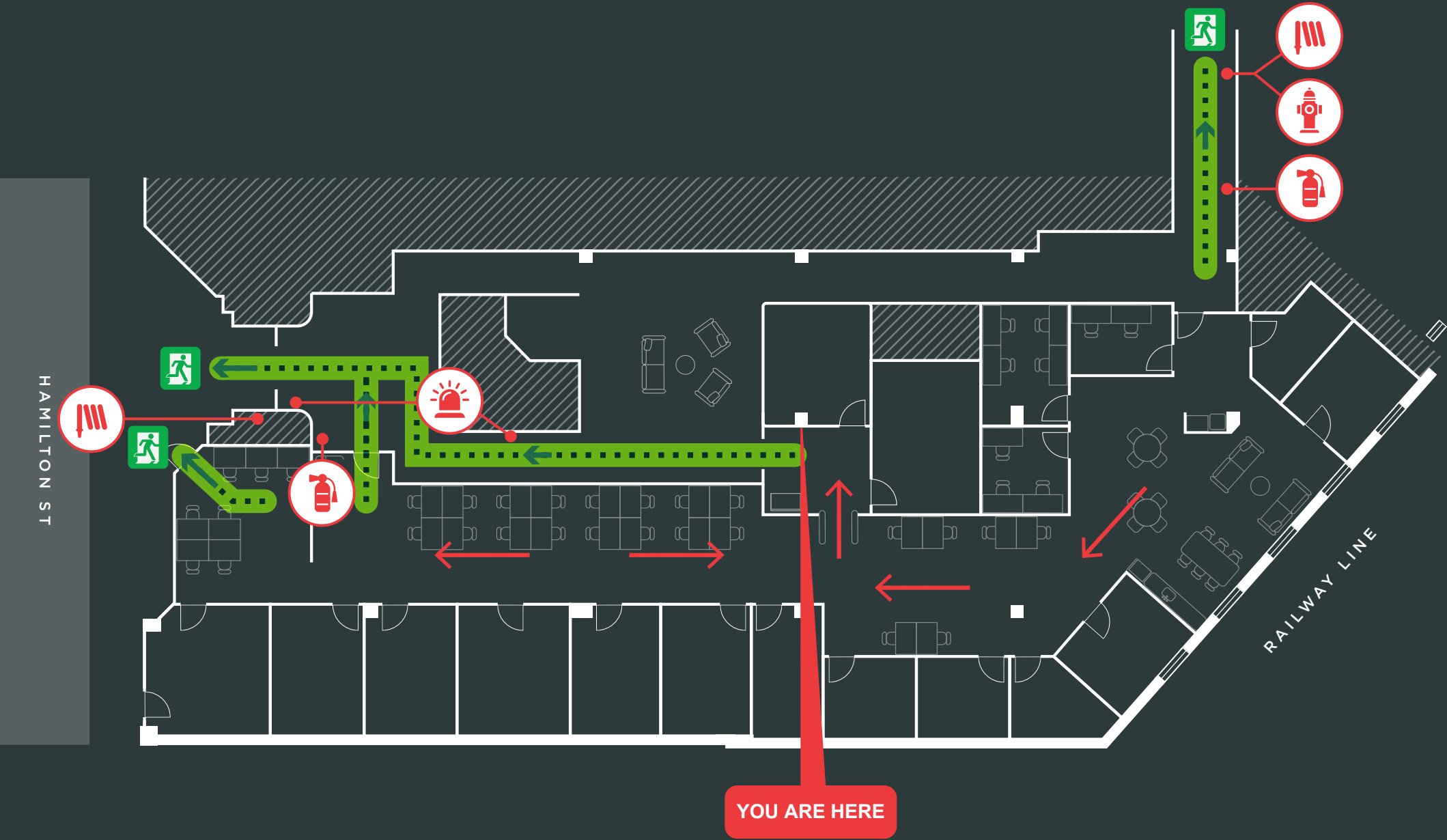


CONTAIN
CLOSE DOORS TO CONTAIN THE FIRE.

E



EVACUATE
TO AN AREA OF SAFETY.



LEGEND

- Fire Extinguisher
- Fire Blanket
- Fire Hydrant
- Fire Alarm
- Emergency Exit

Evacuation Diagram

Waterman Mont Albert

Ground/3-7 Hamilton Street,
Mont Albert VIC 3127

EMERGENCY SERVICES

000

IN CASE OF FIRE, REMEMBER RACE

R



REMOVE
ANY PERSON IN DANGER.

A



ALERT
RAISE THE ALARM.

C



CONTAIN
CLOSE DOORS TO CONTAIN THE FIRE.

E



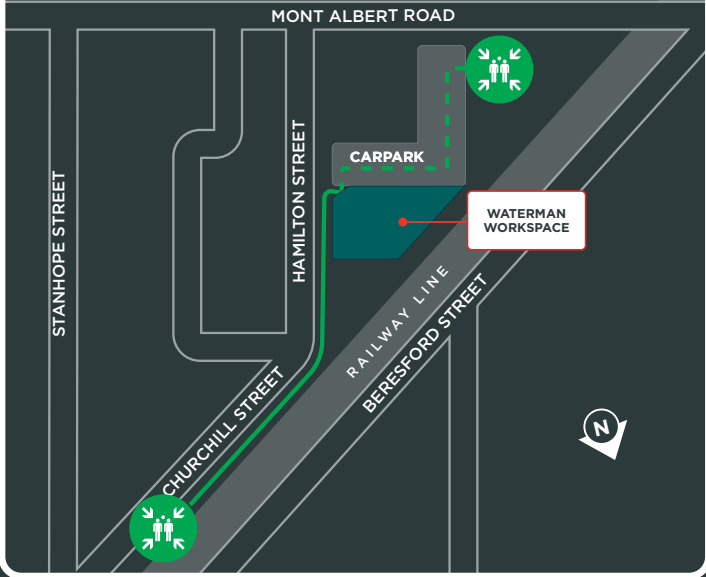
EVACUATE
TO AN AREA OF SAFETY.



ASSEMBLY AREA

Primary: Along churchill street, beyond the entrance to the train station.

Secondary: In front of 345 Art Creative, along Mont Albert road.



LEGEND

-  Fire Extinguisher
-  Fire Blanket
-  Fire Hydrant
-  Fire Alarm
-  Emergency Exit