

Waterman Camberwell

Level 1, 793 Burke Rd,  
Camberwell VIC 3124

EMERGENCY NUMBERS

EMERGENCY SERVICES



CENTRE SECURITY  
0467 967 895

CENTRE MANAGEMENT  
9882 5583

EMERGENCY PROCEDURES

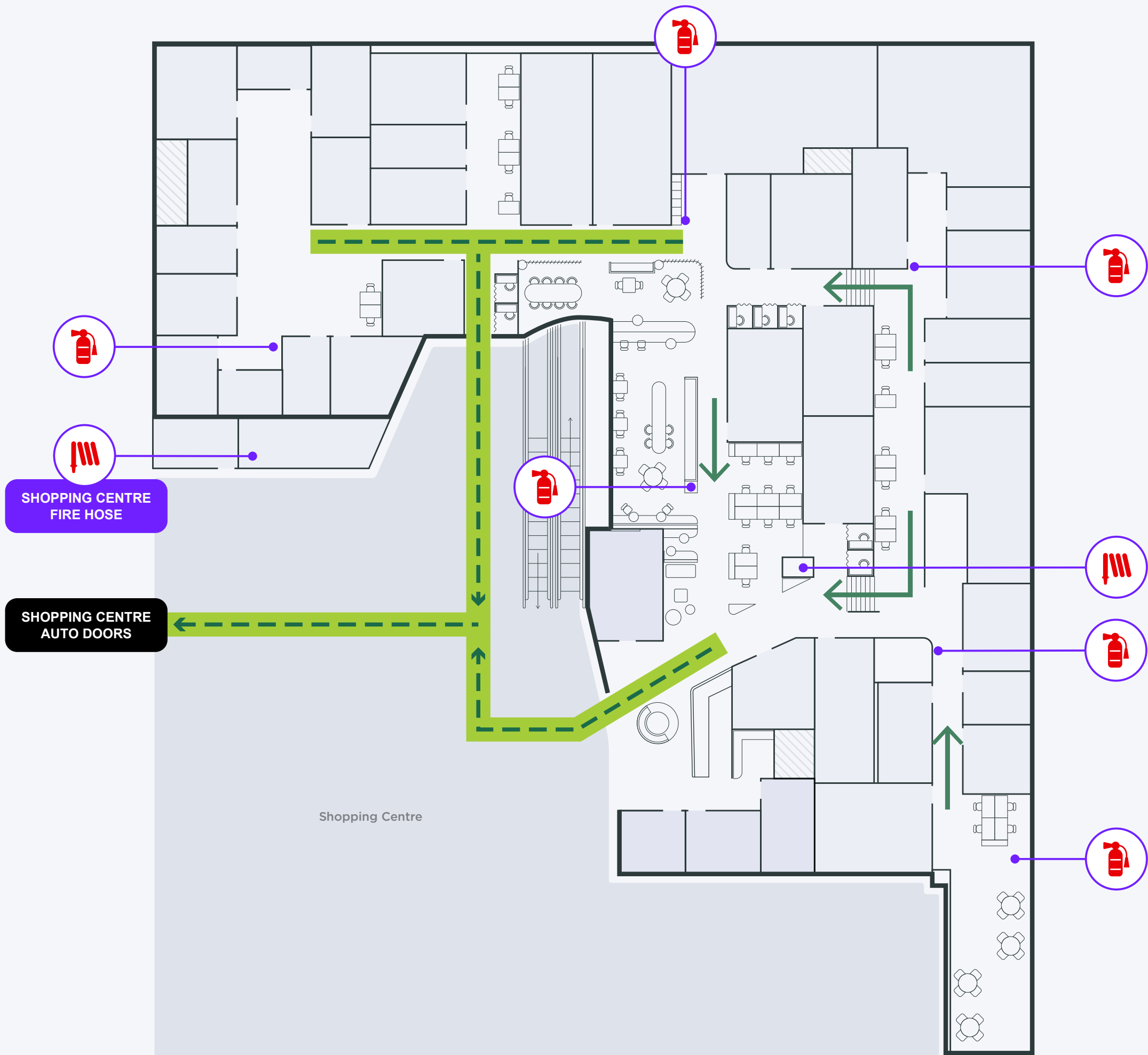
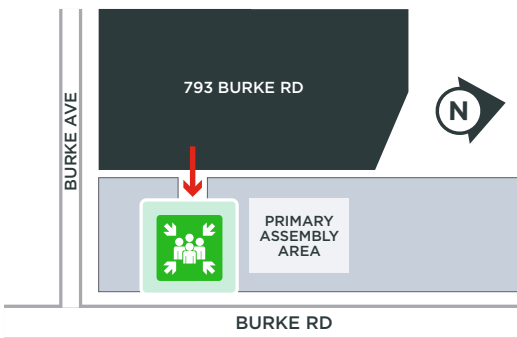
STAGE 1:  
When the 'BEEP' alert signal sounds or danger is present:

- Be aware of a possible emergency but do not evacuate on this tone

STAGE 2:  
When the 'WHOOOP' evacuation signal sounds or danger is present:

- Wardens are to commence evacuating their floor or area immediately.
- Occupants evacuate via the nearest emergency exist and leave your belongings behind. DO NOT UES LIFTS.
- Once outside the building, all persons are to move to and remain at the External Assemble Area until a headcount is conducted by designated personnel
- Do not return to the building until declared safe

ASSEMBLY AREA    Walkway to shops  
via Burke Road



Waterman Camberwell

Level 1, 793 Burke Rd,  
Camberwell VIC 3124

EMERGENCY NUMBERS

EMERGENCY SERVICES



CENTRE SECURITY  
0467 967 895

CENTRE MANAGEMENT  
9882 5583

EMERGENCY PROCEDURES

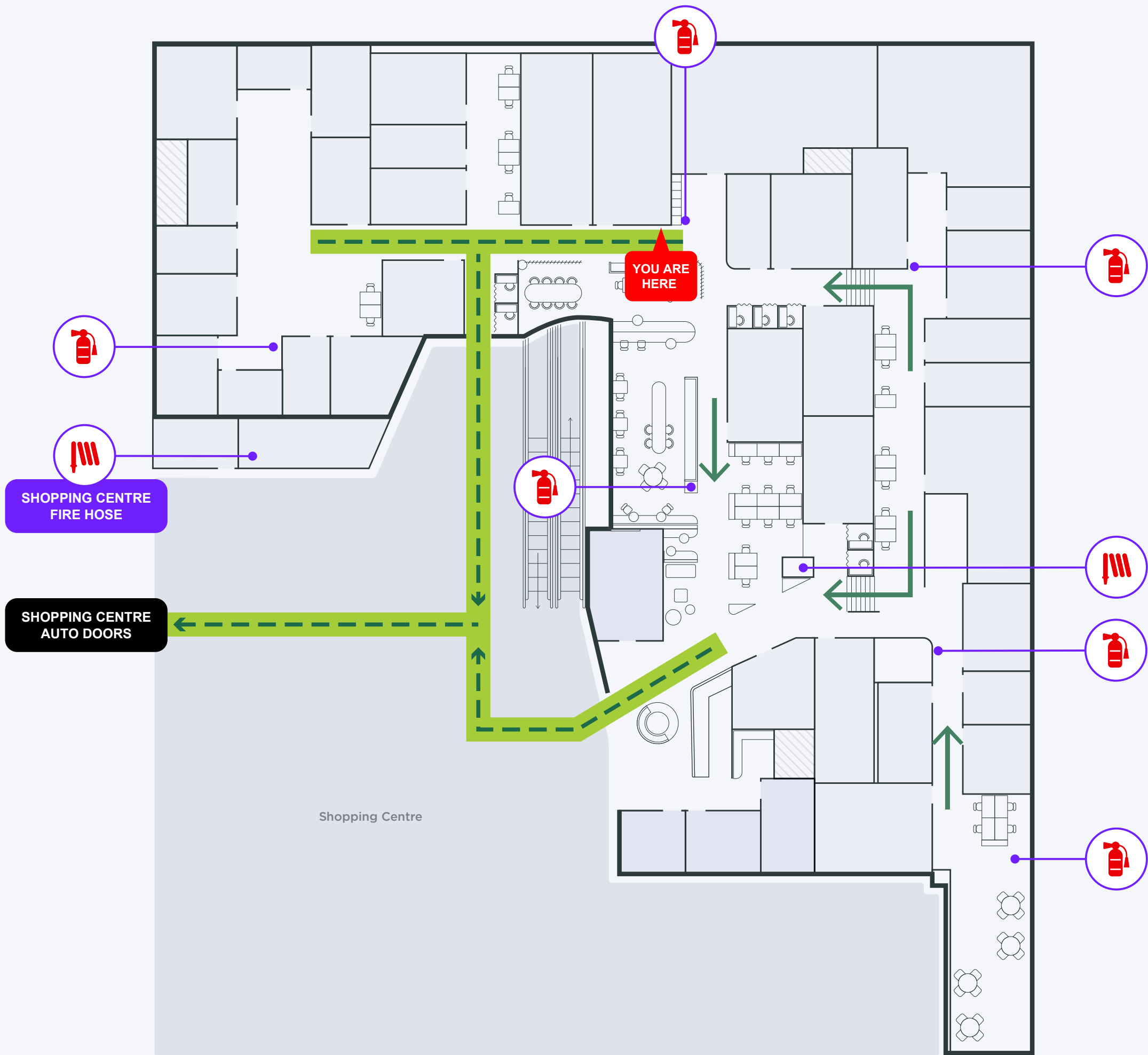
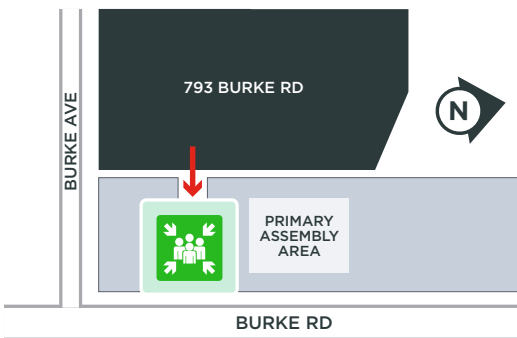
STAGE 1:  
When the 'BEEP' alert signal sounds or danger is present:

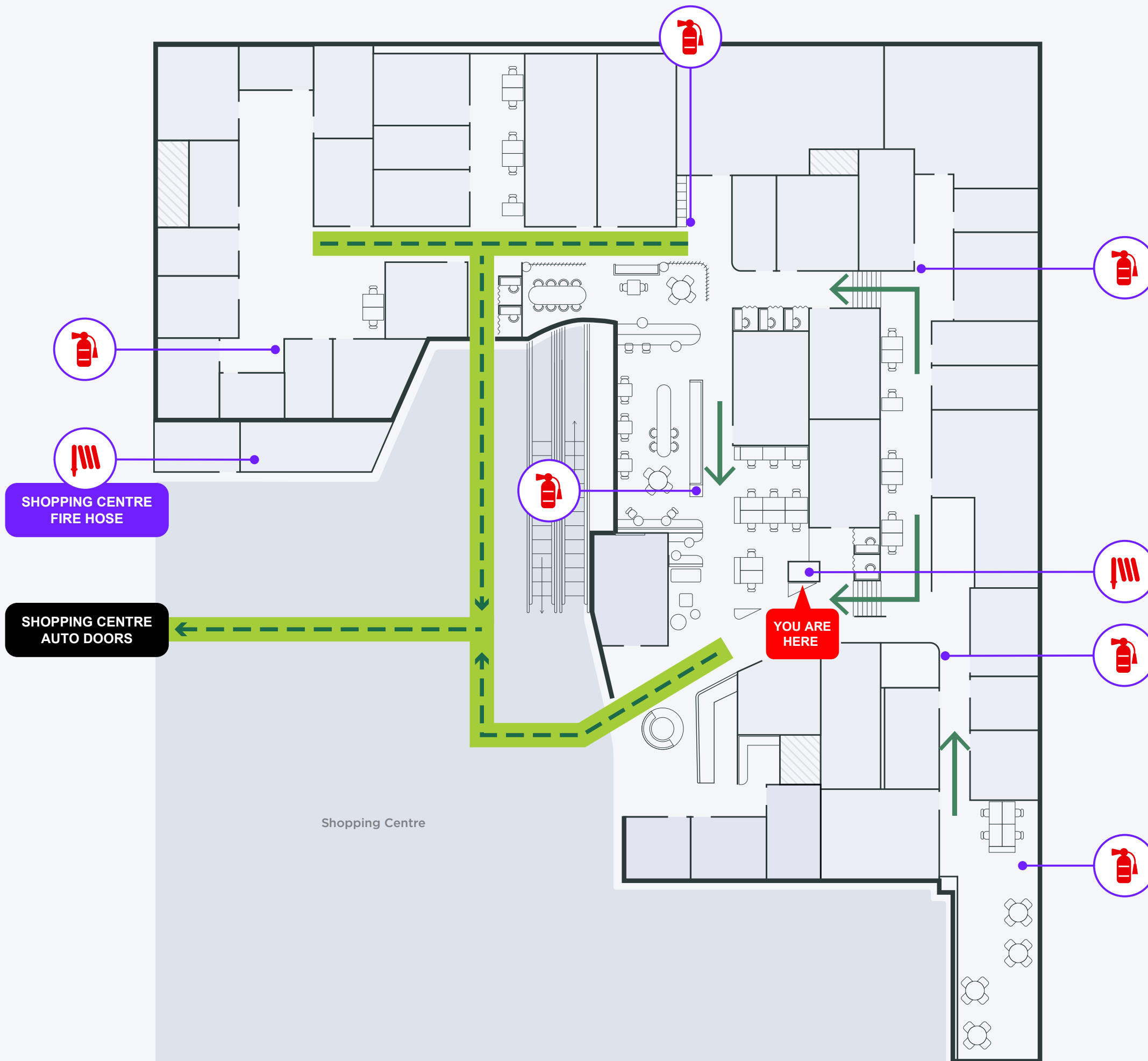
- Be aware of a possible emergency but do not evacuate on this tone

STAGE 2:  
When the 'WHOOOP' evacuation signal sounds or danger is present:

- Wardens are to commence evacuating their floor or area immediately.
- Occupants evacuate via the nearest emergency exist and leave your belongings behind. DO NOT UES LIFTS.
- Once outside the building, all persons are to move to and remain at the External Assemble Area until a headcount is conducted by designated personnel
- Do not return to the building until declared safe

ASSEMBLY AREA    Walkway to shops  
via Burke Road





## Waterman Camberwell

Level 1, 793 Burke Rd,  
Camberwell VIC 3124

### EMERGENCY NUMBERS

#### EMERGENCY SERVICES



**CENTRE SECURITY**  
0467 967 895

**CENTRE MANAGEMENT**  
9882 5583

### EMERGENCY PROCEDURES

#### STAGE 1:

When the 'BEEP' alert signal sounds or danger is present:

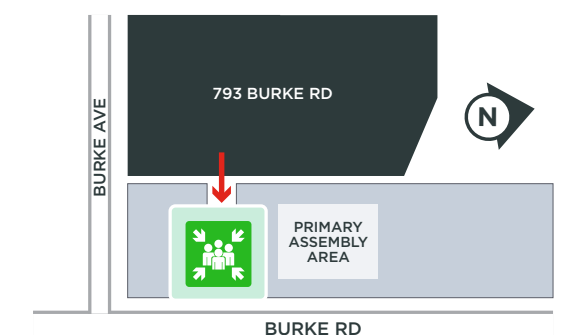
- Be aware of a possible emergency but do not evacuate on this tone

#### STAGE 2:

When the 'WHOO' evacuation signal sounds or danger is present:

- Wardens are to commence evacuating their floor or area immediately.
- Occupants evacuate via the nearest emergency exist and leave your belongings behind. DO NOT UES LIFTS.
- Once outside the building, all persons are to move to and remain at the External Assemble Area until a headcount is conducted by designated personnel
- Do not return to the building until declared safe

**ASSEMBLY AREA** Walkway to shops  
via Burke Road



## Waterman Camberwell

Level 1, 793 Burke Rd,  
Camberwell VIC 3124

### EMERGENCY NUMBERS

#### EMERGENCY SERVICES



**CENTRE SECURITY**  
0467 967 895

**CENTRE MANAGEMENT**  
9882 5583

### EMERGENCY PROCEDURES

#### STAGE 1:

When the 'BEEP' alert signal sounds or danger is present:

- Be aware of a possible emergency but do not evacuate on this tone

#### STAGE 2:

When the 'WHOO' evacuation signal sounds or danger is present:

- Wardens are to commence evacuating their floor or area immediately.
- Occupants evacuate via the nearest emergency exit and leave your belongings behind. DO NOT USE LIFTS.
- Once outside the building, all persons are to move to and remain at the External Assemble Area until a headcount is conducted by designated personnel
- Do not return to the building until declared safe

**ASSEMBLY AREA** Walkway to shops  
via Burke Road

